

# ASTROLINE A3

**New generation** solution for **extra big-size** light boxes and channel letters with a depth of **120+ mm**.

Due to professional optics **only 11 modules** per square meter is enough for the uniform illumination.

Starting from the depth of 130 mm a distance between centers of modules - 260 mm.

At least **60% LESS** modules and consumed power per square meter.

Equipped with new generation LED chip and increased **brightness twice to 198 lm**.

Improved design and installation functionality.

Various color solutions available ● 7500K

## Specially designed for:

- Extra big-size light boxes, channel letters and roof constructions
- Recommended installation depth 120+ mm

## Features:

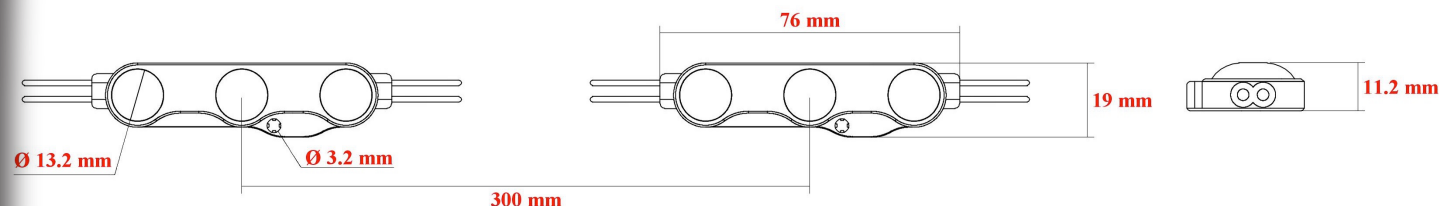
- Power consumption is only 20 W per square meter.
- Special polycarbonate lens with light transmittance > 88%
- Efficiency up to **110 lm/W**
- Maximum Tj temperature < 80 °C
- **LM80** international certificate for LEDs
- HB fire protection level
- High protection level of IP66
- Light decay < 30% after **60,000 hrs**
- **5 years warranty**

[www.kaisenelectric.com](http://www.kaisenelectric.com)

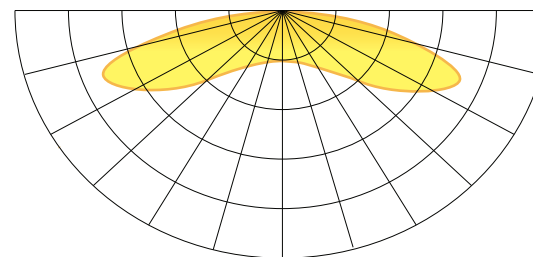


# KAISEN

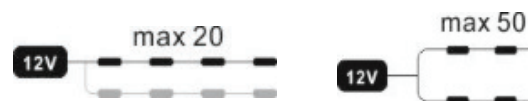
## Dimensions



## Light distribution graph



Beam angle: 170°



## Technical information

Colors available :	○
Power	1,8 W
Light output	198 lm
LED type	2835
Input	12VDC
Color temperature	○ 7500 K
Beam angle	170°
Protection level	IP 66
Working temperature	-30 +50 °C

## Packing information

Packing type	Chain	Package	Box
Quantity	20 pcs	100 pcs	1120 pcs
Weight	0,08 kg	0,4 kg	18 kg

## Illumination table

Installation depth	Illuminance	Distance between centers	Quantity per 1 sq m	Power per 1 sq m
140 mm	990 lux	280 mm	13 pcs	23 W
150 mm	860 lux	300 mm	11 pcs	20 W
160 mm	840 lux	300 mm	11 pcs	20 W
180 mm	780 lux	300 mm	11 pcs	20 W
200 mm	770 lux	300 mm	11 pcs	20 W