

ASTROLINE A1

New generation of innovative solution for **middle-size** light boxes and channel letters with a depth of **60-100mm**.

Due to professional optics **only 31 modules** per square meter is enough for the uniform illumination.

Starting from the depth of 80 mm a distance between centers of modules - 160 mm.

At least **50% LESS** modules and consumed power per square meter.

Equipped with new generation LED chip and increased **brightness twice to 66 lm**.

Can be installed as a regular module and mounted as a pixel.

Improved design and installation functionality.

Various color solutions available ● 7500K

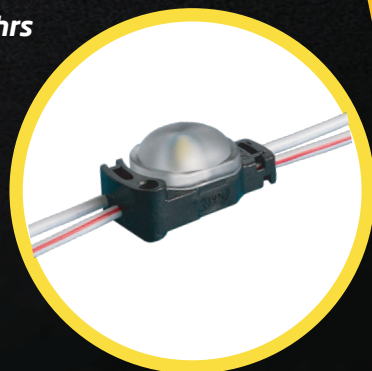
Specially designed for:

- Middle-size light boxes and channel letters
- Recommended installation depth 60-100 mm
- Surface mounted or **through hole installation options**

Features:

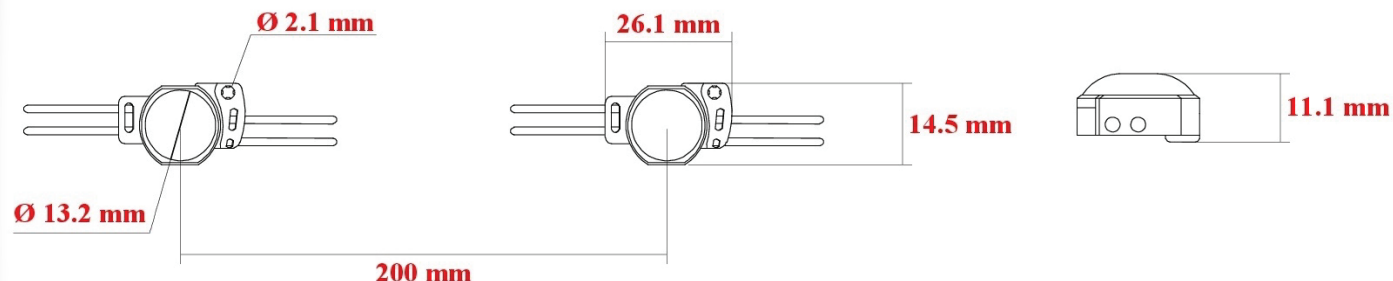
- The **smallest quantity** of modules per square meter **on the market !**
- Power consumption is only 20 W per square meter.
- Special polycarbonate lens with light transmittance > 88%
- Efficiency up to **110 lm/W**
- Maximum Tj temperature < 80 °C
- **LM80** international certificate for LEDs
- HB fire protection level
- High protection level of IP66
- Light decay < 30% after **60,000 hrs**
- **5 years warranty**

www.kaisenelectric.com

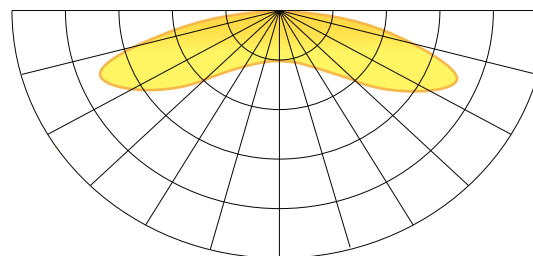


KAISEN

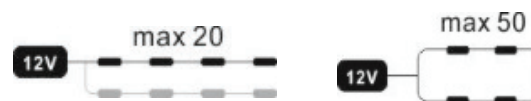
Dimensions



Light distribution graph



Beam angle: 170°



Technical information

Colors available :	○
Power	0,6 W
Light output	66 lm
LED type	2835
Input	12VDC
Color temperature	○ 7500 K
Beam angle	170°
Protection level	IP 66
Working temperature	-30 +50 °C

Packing information

Packing type	Chain	Package	Box
Quantity	20 pcs	100 pcs	2800 pcs
Weight	0,08 kg	0,4 kg	18 kg

Illumination table

Installation depth	Illuminance	Distance between centers	Quantity per 1 sq m	Power per 1 sq m
50 mm	3060 lux	100 mm	100 pcs	60 W
60 mm	2115 lux	120 mm	64 pcs	42 W
70 mm	1700 lux	140 mm	51 pcs	31 W
80 mm	1300 lux	160 mm	39 pcs	23 W
90 mm	1010 lux	180 mm	31 pcs	19 W